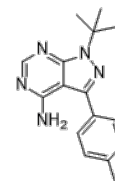


**Product Name** : Src inhibitor PP1  
**Cat. No.** : PC-24574  
**CAS No.** : 172889-26-8  
**Molecular Formula** : C<sub>16</sub>H<sub>19</sub>N<sub>5</sub>  
**Molecular Weight** : 281.36  
**Target** : Src  
**Solubility** : 10 mM in DMSO



### Biological Activity

PP1 is a potent, selective Src family tyrosine kinases inhibitor with IC<sub>50</sub> of 5 and 6 nM for Lck and Fyn, respectively.

### References

Nagao M, et al. J Biol Chem. 1998 Sep 4;273(36):22892-8.

**Caution: Product has not been fully validated for medical applications. Lab Use Only!**

E-mail: tech@probechem.com